



Capacities 5000, 10,000,  
20,000, 30,000 and  
40,000 kg

Stainless Steel  
construction

Small size, low profile

Current matched and  
rationalised

Fully welded, providing  
IP68 protection

Factory Mutual and  
OIML R60, approved to  
6000 divisions

Hazardous area  
approved to EEx ia IIC  
T6

**M**odel 220 is a low profile bending ring load cell designed for high capacity weighing applications, including weighbridges, tanks, silos and high capacity platform scales as well as force measurement.

It's small physical size, combined with high accuracy and low cost, makes this load cell ideally suited for modern low profile designs in both approved applications and process weighing.

This high accuracy load cell has Factory Mutual approval and is OIML R60 approved to 6000 divisions. For hazardous environments, this load cell has an EEx ia IIC T6 approved option. When combined with Teda-Huntleigh mounting accessories, this load cell will provide a simple, accurate and reliable weighing system.

The two additional sense wires feed back the voltage reaching the load cell. Complete compensation of changes in lead resistance due to temperature change and/or cable extension, is achieved by feeding this voltage into the appropriate electronics.

220

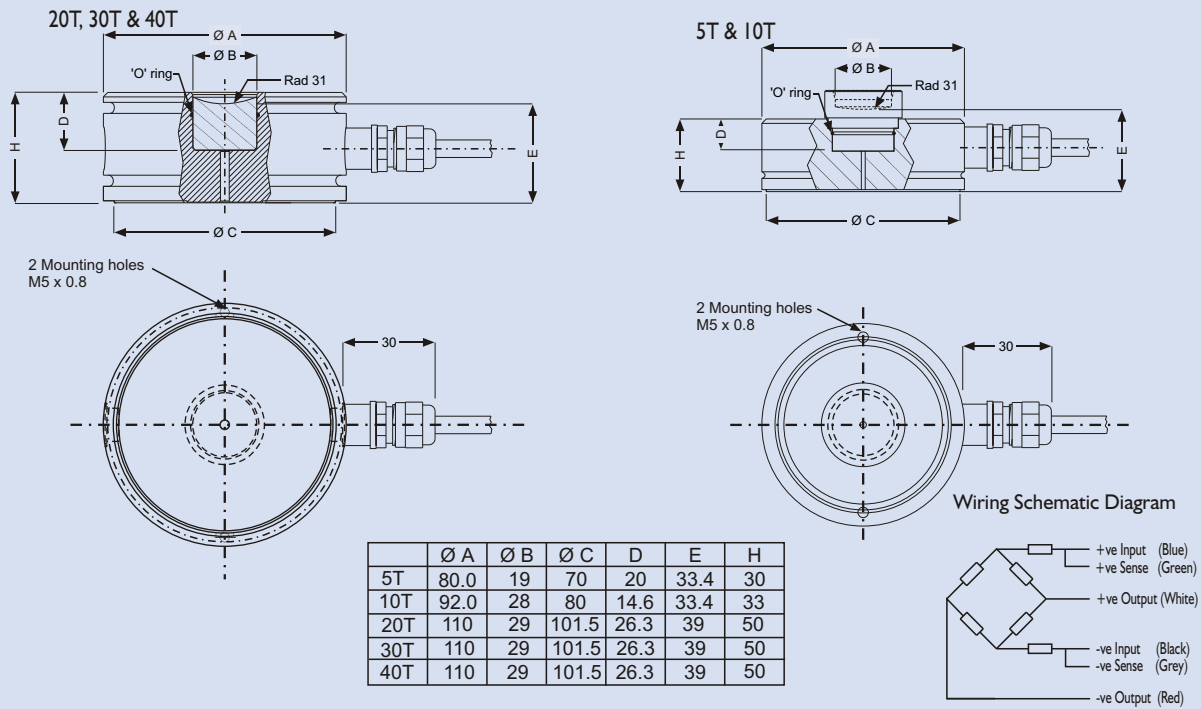
Model 220 High accuracy compression load cell

# 220 SPECIFICATION

GRADE	C1/20	C3/20	C4/30	C6/45**	UNITS
Rated Capacities	5,000, 10,000, 20,000, 30,000, 40,000***				kg
Rated Output	2.0 ± 10%				mV/V
Total Error*	0.050	0.020	0.017	0.01	±% of Applied Load
Zero Return after 30 mins	0.050	0.017	0.013	0.008	±% of Applied Load
Temperature Effect : On Output	0.0040	0.0010	0.0010	0.0006	±% of Rated Output / °C
: On Zero	0.0028	0.0009	0.0010	0.001	±% of Rated Output / °C
Zero Balance	3.0	2.0			±% of Rated Output
Temperature range : Operating					°C
: Compensated					°C
Safe Overload	150				% of Rated Capacity
Ultimate Overload	300				% of Rated Capacity
Excitation : Recommended	10				Volts AC or DC
: Maximum	15				Volts AC or DC
Input Impedance	1065 ± 50				Ohms
Output Impedance	1000 nominal				Ohms
Insulation Impedance	> 2000				MegaOhms
Deflection at Rated Capacity	< 0.5				mm
Weight : (including cable)	1.10 (5T), 1.50 (10T), 3.25 (20T, 30T & 40T)				kg
Construction	Stainless Steel				
Environmental Protection	IP68				
Cable	5m (5T), 10m (10 & 20T) 20m (30T - 40T), 6 Wire, Polyurethane, Double Screened				

\*Total Error - According to OIML R60. \*\* Not available for 30,000 kg or 40,000 kg \*\*\*40,000 kg only 2.6 Mv/v rated output

Outline Dimensions All Capacities in mm.



Due to Tede-Huntleigh's policy of continuous development, these specifications are subject to change without notice.

### The TEDEA-HUNTLEIGH Range

A range of mounting arrangements, and accessories are available for silo, tank and weighbridge applications. Tede-Huntleigh offer other types of compression load cells, from 5000 to 60000 kg. Tede-Huntleigh is the world's leading manufacturer of high quality, high accuracy load cells in volume production. Our manufacturing facilities are ISO 9000 registered. For details of our complete range which covers 1 kg to 100 tonnes, contact us or your local distributor or visit our website at: <http://www.tede-huntleigh.com>



#### Europe

Tede-Huntleigh Europe Ltd.  
37 Portmanmoor Road,  
Cardiff  
CF24 5HE  
United Kingdom.  
Tel: +44(0)29-20460231  
Fax: +44(0)29-20462173

#### International

Tede-Huntleigh International  
5 Hazoran St,  
New Industrial Zone  
P.O. Box 8381, Netanya 42506,  
Israel.  
Tel: +972-9-863-8888  
Fax: +972-9-863-8800

#### China

Beijing Tede-Huntleigh.  
No. 16 Hong Da Bei Lu,  
Da Xing County, Beijing Economic  
& Technology Development Area,  
Beijing 100176. China  
Tel: +86-10-67881604-09  
Fax: +86-10-67881576

#### Germany

Tede-Huntleigh GmbH.  
Mümlingweg 18  
D-64297  
Darmstadt-Eberstadt,  
Germany.  
Tel: +49-6151-94460  
Fax: +49-6151-944640

#### USA

Tede-Huntleigh Incorporated.  
20630 Plummer Street,  
Chatsworth,  
CA 91311  
USA.  
Tel: +1-818-701-2700  
Fax: +1-818-701-2799

#### France

SEEA sa.  
16 Rue Francis Vovelle  
28000 Chartres,  
France.  
Tel: +33-2-37-33-31-20  
Fax: +33-2-37-33-31-29